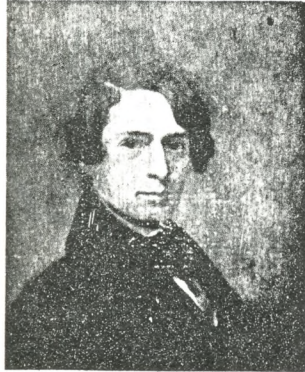


SURVEYORS OF THE PAST



Portrait of Henry David Thoreau in 1839 when he was 22 years old; artist was younger sister Sophia.

The following was submitted by the late A. A. Outram. We regret that it was not printed earlier, but it is a fitting introduction to our "Surveyors of the Past" series.

David Henry Thoreau
1817 - 1862

Thoreau was born in Concord, Mass. He studied at Harvard on a scholarship and

was respected as a Latin and Greek scholar. He started to teach in the Concord Village school but resigned in a few weeks because he was opposed to flogging. His life was spent in opposition to various existing conditions. In 1846 Thoreau was jailed, having refused to pay his poll tax as a part of his general protest against a government supporting slavery and war with Mexico. One of his famous essays, *Civil Disobedience* (1849) later became a guide for Ghandi's passive resistance. Recently it has influenced the action of Negroes in U.S.A.

He was a great naturalist and was in tune with the flora and fauna of his countryside. Many know of him only through one of his books, *Walden, or Life in the Woods*. One observer stated that Thoreau got more out of ten minutes with a sparrow than most men would get out of a night with Cleopatra. After studying tree growth and discovering the principle of ecologic association, he wrote *The Succession of Forest Trees* (1860). It was the first well formulated presentation of the idea of forest succession and his major scientific contribution.

A list of 19th century philosophers would be incomplete without the name of

Thoreau. He was a friend of Ralph Waldo Emerson, and one of Emerson's famous circle of transcendentalists. Although remembered as philosopher, naturalist, teacher, author and poet, few are aware that at one time he practised land surveying and was official surveyor for the Town of Concord. Below is a copy of his advertisement.

LAND SURVEYING

Of all kinds, according to the best methods known: the necessary data supplied, in order that the boundaries of Farms may be accurately described in Deeds; Woods lotted off distinctly and according to a regular plan; Roads laid out, &c., &c. Distinct and accurate Plans of Farms furnished, with the buildings thereon, of any size, and with a scale of feet attached, to accompany the Farm Book, so that the land may be laid out in a winter evening.

Areas warranted accurate within almost any degree of exactness, and the Variation of the Compass given, so that the lines can be run again. Apply to

HENRY D. THOREAU.